

Velosti N-channel 650V, 3A, 1.6Ω Power MOSFET

Description

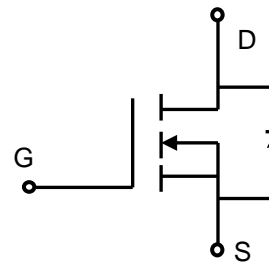
Velosti Power MOSFET is fabricated using advanced super junction technology. The resulting device has extremely low on resistance, making it especially suitable for applications which require superior power density and outstanding efficiency.

Features

- ◆ Ultra low $R_{DS(on)}$
- ◆ Ultra low gate charge (typ. $Q_g = 10\text{nC}$)
- ◆ Low C_{rss} (typ. 4 pF)
- ◆ 100% UIS tested
- ◆ RoHS compliant

Product Summary

| | |
|----------------------|------|
| $V_{DS} @ T_{j,max}$ | 700V |
| $R_{DS(on),max}$ | 1.6Ω |
| I_{DM} | 7.5A |
| $Q_{g,typ}$ | 10nC |



N-Channel MOSFET



Absolute Maximum Ratings

| Parameter | Symbol | VSV65R160B2 | Unit |
|---|----------------|-------------|---------------------|
| Drain-Source Voltage | V_{DS} | 650 | V |
| Continuous drain current ($T_C = 25^\circ\text{C}$) ($T_C = 100^\circ\text{C}$) | I_D | 3 | A |
| | | 1.8 | A |
| Pulsed drain current ¹⁾ | I_{DM} | 7.5 | A |
| Gate-Source voltage | V_{GS} | ± 30 | V |
| Avalanche energy, single pulse ²⁾ | E_{AS} | 100 | mJ |
| Avalanche energy, repetitive ¹⁾ | E_{AR} | 0.2 | mJ |
| Avalanche current, repetitive ¹⁾ | I_{AR} | 3 | A |
| Power Dissipation ($T_C = 25^\circ\text{C}$) - Derate above 25°C | P_D | 38 | W |
| | | 0.3 | W/ $^\circ\text{C}$ |
| Operating and Storage Temperature Range | T_J, T_{STG} | -55 to +150 | $^\circ\text{C}$ |
| Continuous diode forward current | I_S | 3 | A |
| Diode pulse current | $I_{S,pulse}$ | 7.5 | A |

Thermal Characteristics

| Parameter | Symbol | VSV65R160B2 | Unit |
|---|-----------------|-------------|--------------------|
| Thermal Resistance, Junction-to-Case | $R_{\theta JC}$ | 3.3 | $^\circ\text{C/W}$ |
| Thermal Resistance, Junction-to-Ambient | $R_{\theta JA}$ | 75 | $^\circ\text{C/W}$ |

Package Marking and Ordering Information

| Device | Device Package | Marking |
|-------------|----------------|-------------|
| VSV65R160B2 | TO-252 | VSV65R160B2 |

Electrical Characteristics $T_c = 25^\circ\text{C}$ unless otherwise noted

| Parameter | Symbol | Test Condition | Min. | Typ. | Max. | Unit |
|--------------------------------------|---------------|---|------|------|------|---------------|
| Static characteristics | | | | | | |
| Drain-source breakdown voltage | BV_{DSS} | $V_{GS}=0\text{ V}, I_D=0.25\text{ mA}$ | 650 | - | - | V |
| Gate threshold voltage | $V_{GS(th)}$ | $V_{DS}=V_{GS}, I_D=0.25\text{ mA}$ | 2.5 | 3.5 | 4.5 | V |
| Drain cut-off current | I_{DSS} | $V_{DS}=650\text{ V}, V_{GS}=0\text{ V}, T_j = 25^\circ\text{C}$ | - | - | 1 | μA |
| Gate leakage current, Forward | I_{GSSF} | $V_{GS}=30\text{ V}, V_{DS}=0\text{ V}$ | - | - | 100 | nA |
| Gate leakage current, Reverse | I_{GSSR} | $V_{GS}=-30\text{ V}, V_{DS}=0\text{ V}$ | - | - | -100 | nA |
| Drain-source on-state resistance | $R_{DS(on)}$ | $V_{GS}=10\text{ V}, I_D=1.5\text{ A}$ | - | - | - | Ω |
| | | $T_j = 25^\circ\text{C}$ | - | 1.35 | 1.6 | |
| | | $T_j = 150^\circ\text{C}$ | - | 3.51 | - | |
| Gate resistance | R_G | $f=1\text{ MHz}, \text{open drain}$ | - | 2.8 | - | Ω |
| Dynamic characteristics | | | | | | |
| Input capacitance | C_{iss} | $V_{DS} = 25\text{ V}, V_{GS} = 0\text{ V}, f = 1\text{ MHz}$ | - | 290 | - | pF |
| Output capacitance | C_{oss} | | - | 200 | - | |
| Reverse transfer capacitance | C_{rss} | | - | 4 | - | |
| Turn-on delay time | $t_{d(on)}$ | $V_{DD} = 300\text{ V}, I_D = 1.5\text{ A}, R_G = 25\Omega, V_{GS}=10\text{ V}$ | - | 13 | - | ns |
| Rise time | t_r | | - | 12 | - | |
| Turn-off delay time | $t_{d(off)}$ | | - | 33 | - | |
| Fall time | t_f | | - | 10 | - | |
| Gate charge characteristics | | | | | | |
| Gate to source charge | Q_{gs} | $V_{DD}=480\text{ V}, I_D=1.5\text{ A}, V_{GS}=0\text{ to }10\text{ V}$ | - | 2 | - | nC |
| Gate to drain charge | Q_{gd} | | - | 5 | - | |
| Gate charge total | Q_g | | - | 10 | - | |
| Gate plateau voltage | $V_{plateau}$ | | - | 5.3 | - | V |
| Reverse diode characteristics | | | | | | |
| Diode forward voltage | V_{SD} | $V_{GS}=0\text{ V}, I_F=1.5\text{ A}$ | - | - | 1.2 | V |
| Reverse recovery time | t_{rr} | $V_R=50\text{ V}, I_F=3\text{ A}, dI_F/dt=100\text{ A}/\mu\text{s}$ | - | 200 | - | ns |
| Reverse recovery charge | Q_{rr} | | - | 1.0 | - | μC |
| Peak reverse recovery current | I_{rrm} | | - | 10 | - | A |

Notes:

1. Repetitive Rating: Pulse width limited by maximum junction temperature
2. $I_{AS} = 1.6\text{ A}, V_{DD} = 60\text{ V}, R_G = 25\Omega, \text{Starting } T_j = 25^\circ\text{C}$

Electrical Characteristics Diagrams

Figure 1. On-Region Characteristics

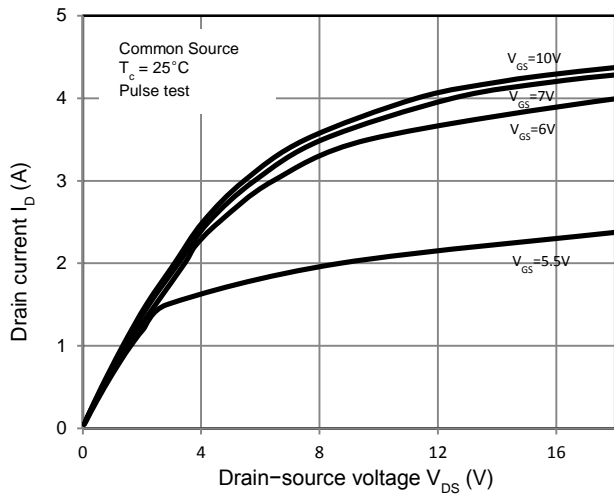


Figure 2. Transfer Characteristics

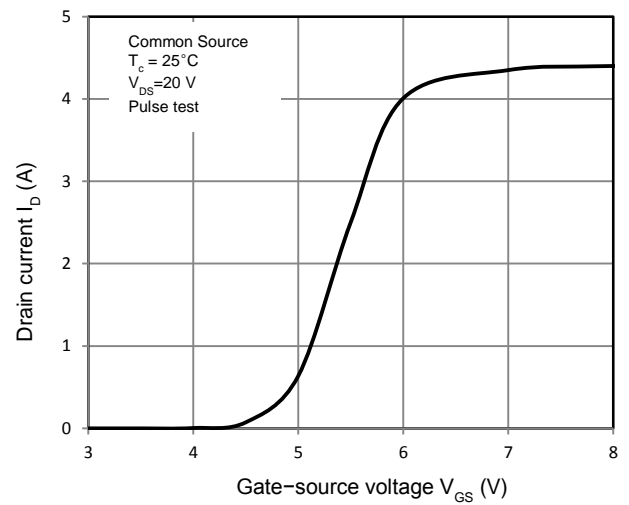


Figure 3. On-Resistance Variation vs. Drain Current

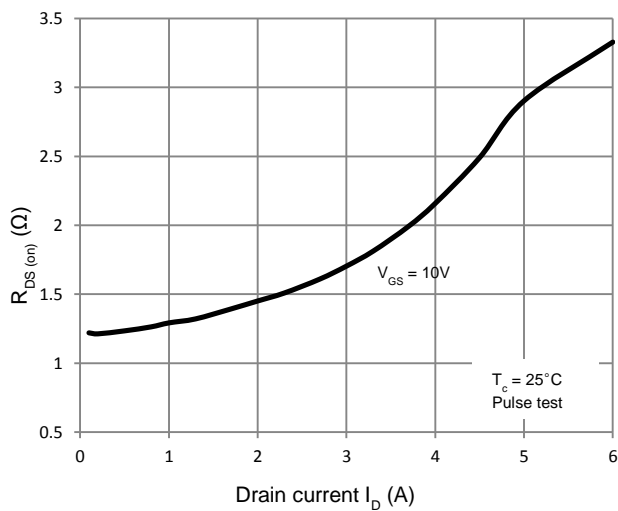


Figure 4. Threshold Voltage vs. Temperature

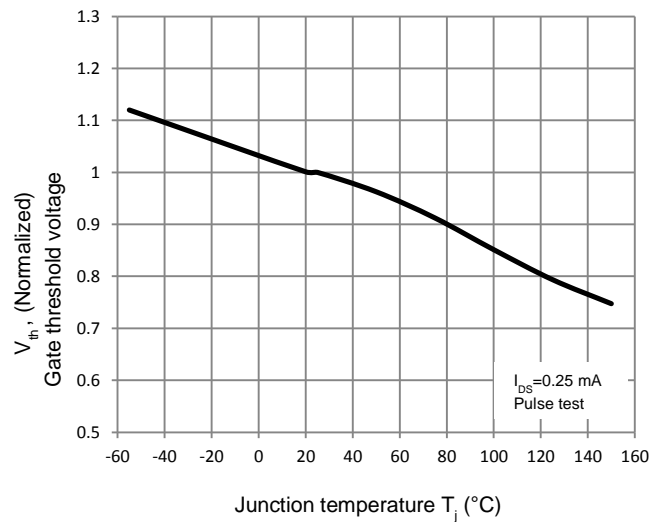


Figure 5. Breakdown Voltage vs. Temperature

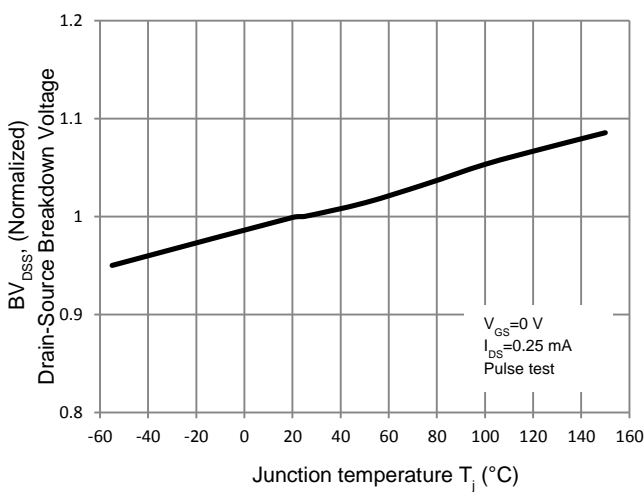


Figure 6. On-Resistance vs. Temperature

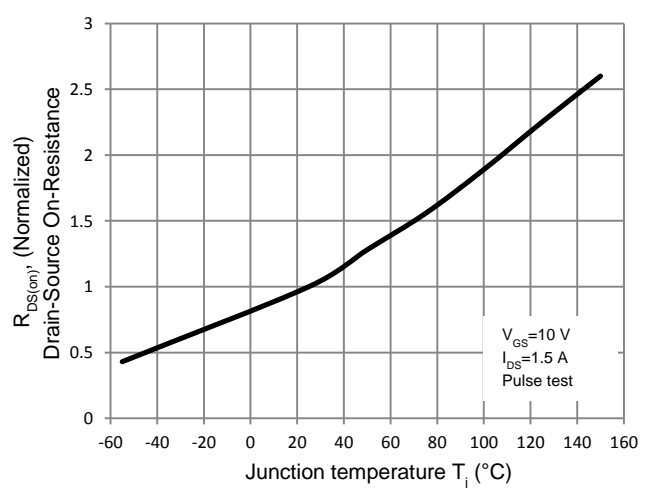


Figure 7. Capacitance Characteristics

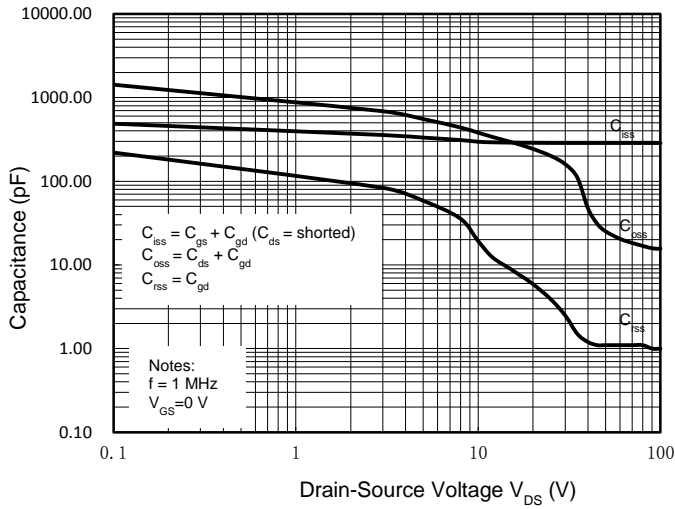


Figure 8. Gate Charge Characteristics

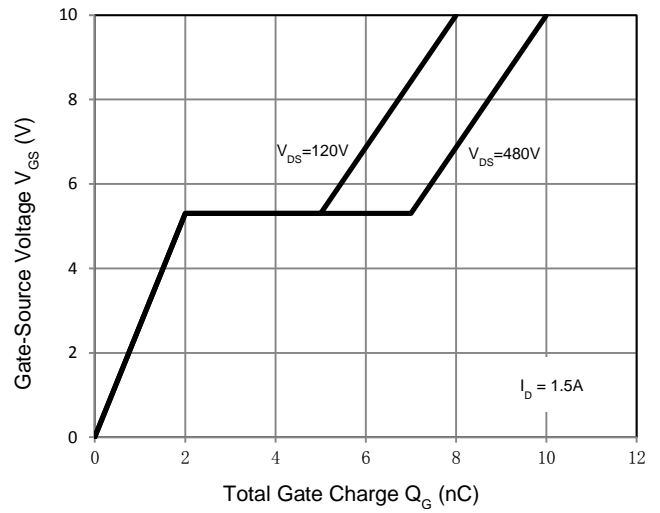


Figure 9. Maximum Safe Operating Area

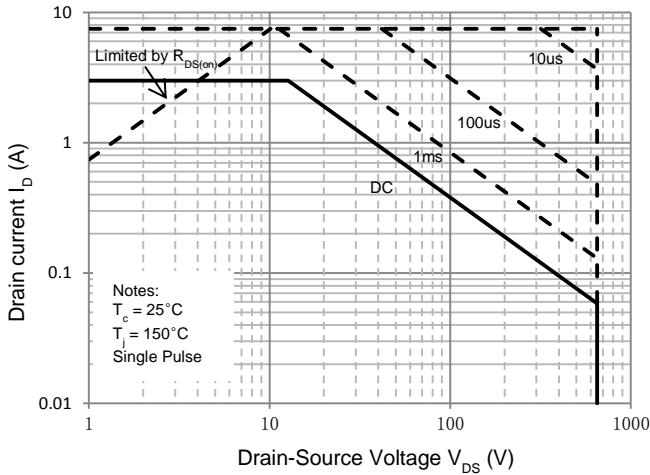


Figure 10. Power Dissipation vs. Temperature

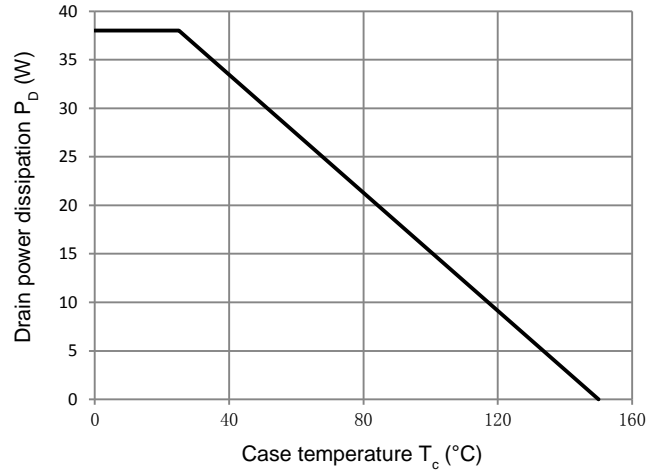
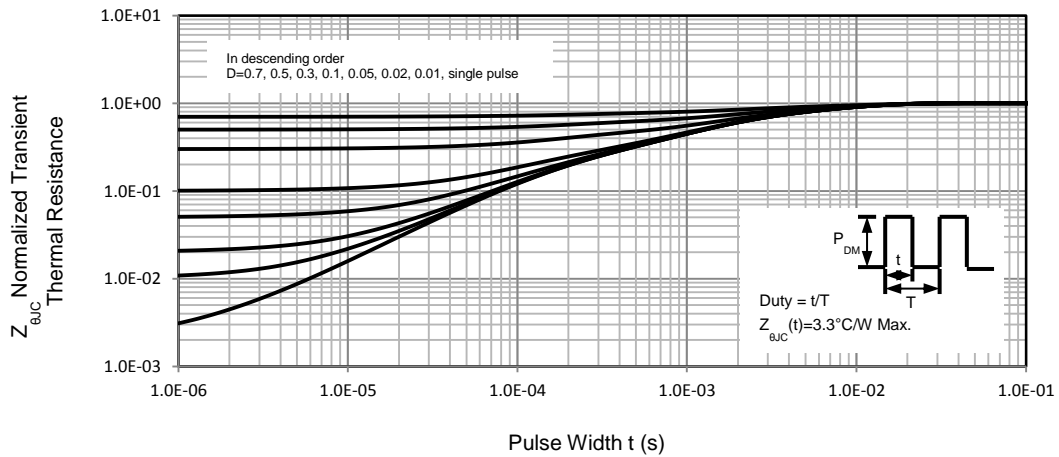
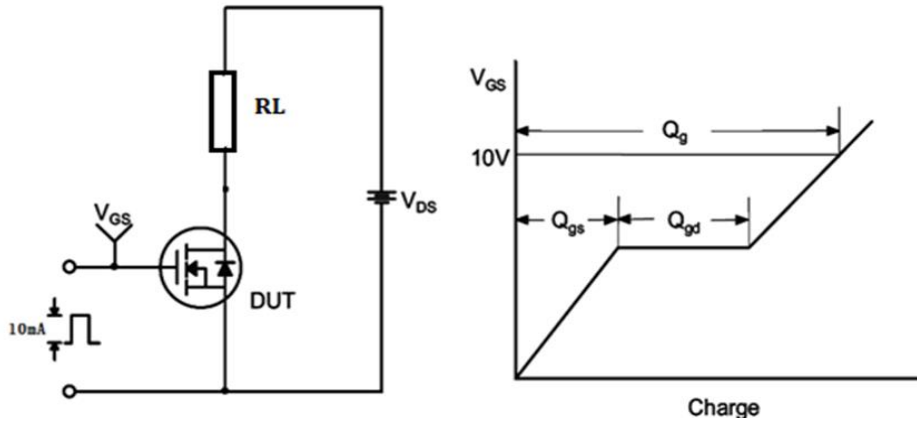


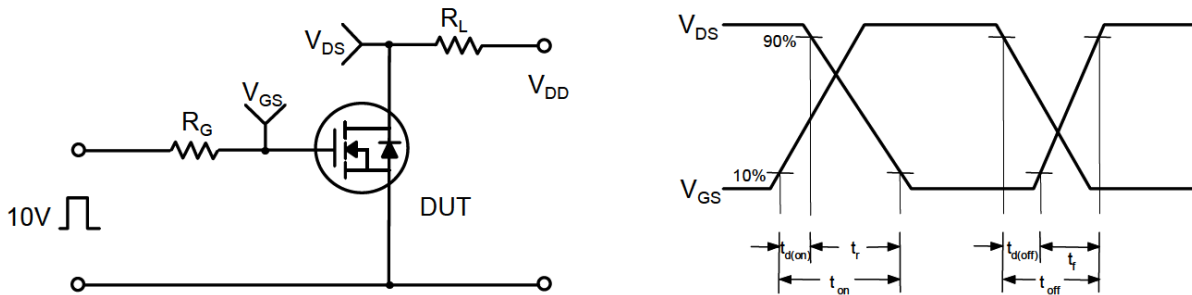
Figure 11. Transient Thermal Response Curve



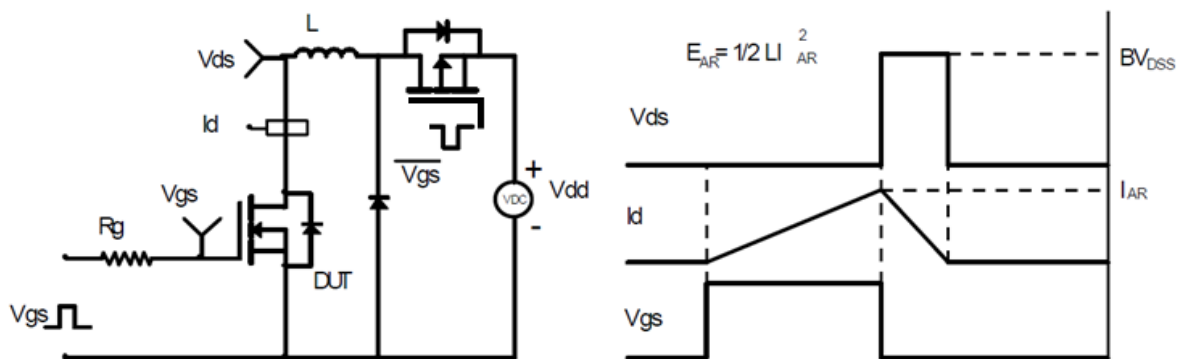
Gate Charge Test Circuit & Waveform



Switching Test Circuit & Waveforms

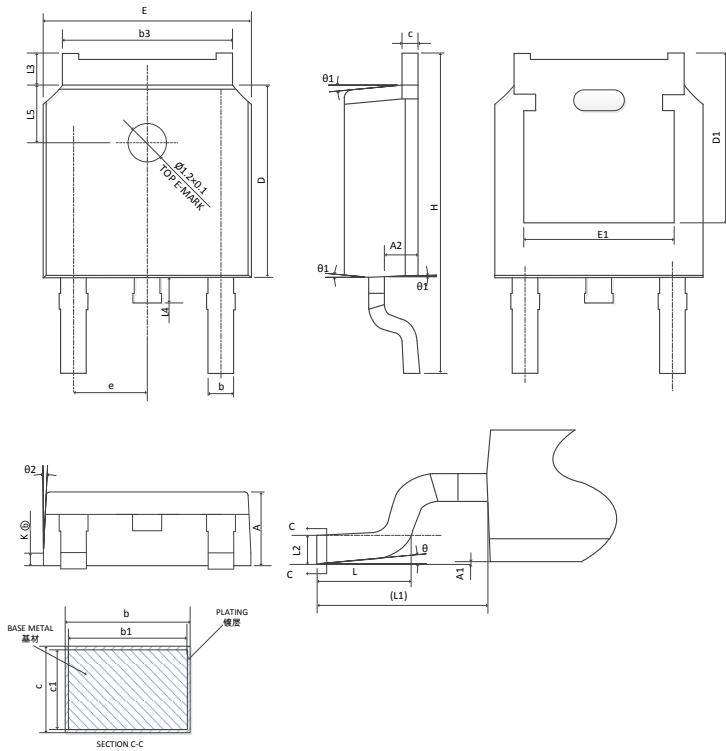


Unclamped Inductive Switching Test Circuit & Waveforms



Mechanical Dimensions for TO-252

COMMON DIMENSIONS



| SYMBOL | mm | | |
|--------|----------|-------|-------|
| | MIN | NOM | MAX |
| A | 2.20 | 2.30 | 2.38 |
| A1 | 0.00 | — | 0.10 |
| A2 | 0.97 | 1.07 | 1.17 |
| b | 0.72 | 0.78 | 0.85 |
| b1 | 0.71 | 0.76 | 0.81 |
| b3 | 5.23 | 5.33 | 5.46 |
| c | 0.47 | 0.53 | 0.58 |
| c1 | 0.46 | 0.51 | 0.56 |
| D | 6.00 | 6.10 | 6.20 |
| D1 | 5.30REF | | |
| E | 6.50 | 6.60 | 6.70 |
| E1 | 4.70 | 4.83 | 4.92 |
| e | 2.286BSC | | |
| H | 9.90 | 10.10 | 10.30 |
| L | 1.40 | 1.50 | 1.70 |
| L1 | 2.90REF | | |
| L2 | 0.51BSC | | |
| L3 | 0.90 | — | 1.25 |
| L4 | 0.60 | 0.80 | 1.00 |
| L5 | 1.70 | 1.80 | 1.90 |
| θ | 0° | — | 8° |
| θ1 | 5° | 7° | 9° |
| θ2 | 5° | 7° | 9° |
| K | 0.40REF | | |

Revision History

| Date | Revision | Changes |
|------------|----------|--|
| 2012-5-9 | 2.0 | First release |
| 2012-12-10 | 2.1 | Updated page header |
| 2013-1-9 | 2.2 | Fixed display error in Mac OS environment |
| 2013-11-6 | 2.3 | Revised label marks of figure 4-6. |
| 2013-11-22 | 2.4 | Changed label T_c to T_j in figure 4-6. Unified the display format of $R_{DS(on)}$. |